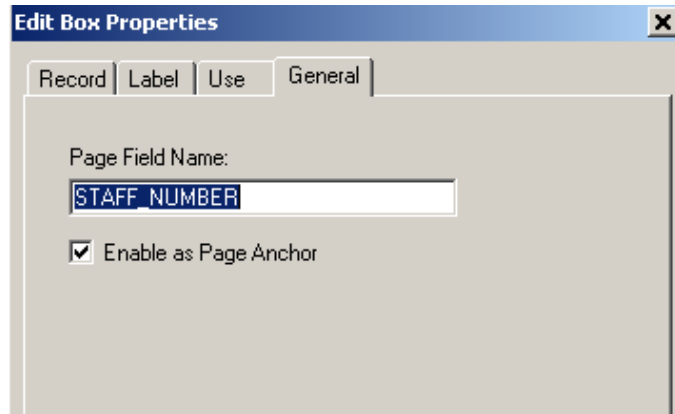


**How to interact client-side Javascript with server-side PeopleCode using
getElementById.focus(), getElementById.submit(),
submitAction_win0(this.form,this.name) and window.showModalDialog**

The following technical steps build on the example created by Richard Yip and displayed online here:

<http://duncandavies.wordpress.com/?p=1204>



So if you are interest in cloning this, just follow the steps below. All necessary codes are enclosed. Drop me a line if you are having a problem with this.

PeopleSoft Apps Designer - Step by step guide

I have added a new class, AN_INVISIBLE to a Style Sheet

AN_INVISIBLE (Class) [X]

Font | Spacing/Alignment | Background | Border | Margins | Miscellaneous

Font Family

[Empty List Box] Add Font Delete Font Move Down Move Up

Font Size

Absolute Length Percentage
 Relative Larger Relative Smaller Not Specified

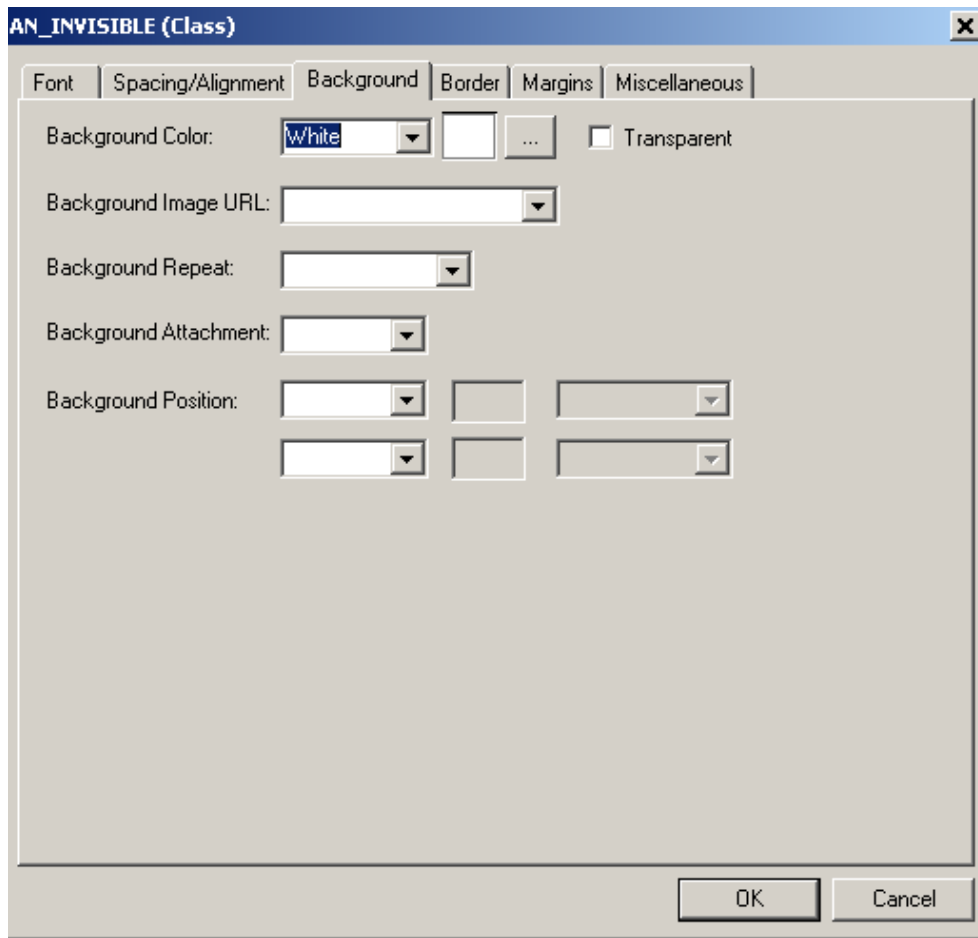
[Dropdown] 0 Pixels [Dropdown]

Font Weight: [Dropdown]
Font Style: [Dropdown]
Font Variant: [Dropdown]
Color: White [Dropdown] [Color Picker] [More Colors]

Effects

- Blink
- Line-through
- Underline
- Overline
- None

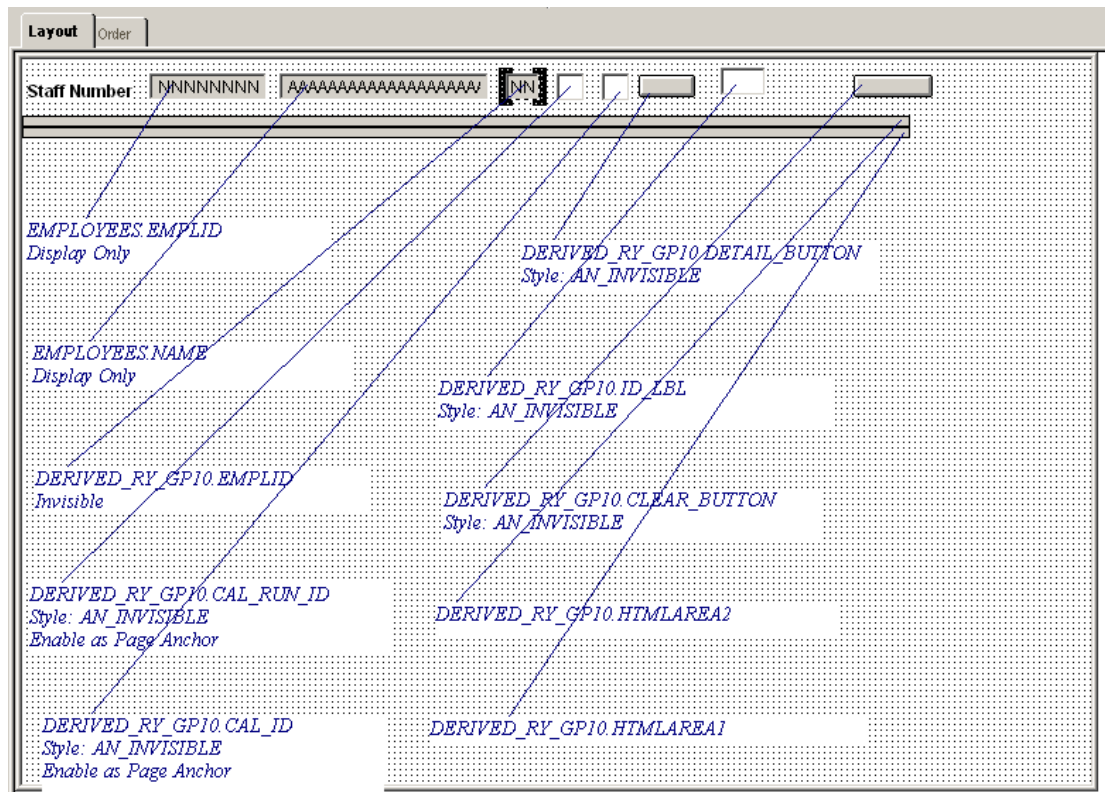
OK Cancel



1. The derived/work record used in this example is DERIVED_RY_GP10 .

Record Fields		Record Type					
Num	Field Name	Type	Len	Format	Short Name	Long Name	
1	EMPLID	Char	11	Upper	Staff Number	Staff Number	
2	CAL_RUN_ID	Char	18	Upper	Calendar Group	Calendar Group ID	
3	CAL_ID	Char	18	Upper	Calendar ID	Calendar ID	
4	ID_LBL	Char	11	Upper	ID	ID	
5	HTMLAREA1	Long	0		HTML1	HTML Area1	
6	HTMLAREA2	Long	0		HTML2	HTML Area2	
7	DETAIL_BUTTON	Char	1	Upper	Details	More	
8	CLEAR_BUTTON	Char	1	Upper	Clear Button	Clear Balance Button	

2. The page used looks like this.



3. The Peoplecodes used in this example

```

DERIVED_RY_GP10.HTMLAREA2.RowInit
If %Page = Page.RY_GP_RSLT_CUSTOM Then
/* Builds cal_run_id and cal_id for employee */
DERIVED_RY_GP10.EMPLID = EMPLOYEES.EMPLID;
DERIVED_RY_GP10.HTMLAREA2 = " ";
DERIVED_RY_GP10.HTMLAREA2 = "</div>";
/*CSS for page*/
DERIVED_RY_GP10.HTMLAREA2 = DERIVED_RY_GP10.HTMLAREA2 |
GetHTMLText(HTML.RY_GP_RSLT_CUSTOM_CSS);
/*JS script for page*/
DERIVED_RY_GP10.HTMLAREA2 = DERIVED_RY_GP10.HTMLAREA2 |
GetHTMLText(HTML.RY_GP_RSLT_CUSTOM_JS);
/*SQL to extract and format calendars for employee*/
&html = GetHTMLText(HTML.RY_GP_RSLT_CAL_PIVOT_SQL,
DERIVED_RY_GP10.EMPLID);
&sql = CreateSQL(&html);
&i = 1;
While &sql.Fetch(&year, &apr, &may, &jun, &jul, &aug, &sep, &oct, &nov, &dec, &jan,
&feb, &mar);
If &i = 1 Then
/* if 1st row, do header. Then do details */
&hdr = GetHTMLText(HTML.RY_GP_RSLT_CAL_PIVOT_SQL_HDR);
DERIVED_RY_GP10.HTMLAREA2 = DERIVED_RY_GP10.HTMLAREA2 | &hdr;
&dtl = GetHTMLText(HTML.RY_GP_RSLT_CAL_PIVOT_SQL_DTL, &apr, &may,
&jun, &jul, &aug, &sep, &oct, &nov, &dec, &jan, &feb, &mar, &year);
DERIVED_RY_GP10.HTMLAREA2 = DERIVED_RY_GP10.HTMLAREA2 | &dtl;
&i = &i + 1;
Else
&dtl = GetHTMLText(HTML.RY_GP_RSLT_CAL_PIVOT_SQL_DTL, &apr, &may,
&jun, &jul, &aug, &sep, &oct, &nov, &dec, &jan, &feb, &mar, &year);
DERIVED_RY_GP10.HTMLAREA2 = DERIVED_RY_GP10.HTMLAREA2 | &dtl;

```

```

    &i = &i + 1;
  End-If;
End-While;

  DERIVED_RY_GP10.HTMLAREA2 = DERIVED_RY_GP10.HTMLAREA2 | "</table>";
End-If;

DERIVED_RY_GP10.CAL_ID.RowInit
/* This is used in DERIVED_RY_GP10.DETAIL_BUTTON.FieldChange */

Component number &mynumber;
&mynumber = 1;

DERIVED_RY_GP10.CLEAR_BUTTON.FieldChange

If %Page = Page.RY_GP_RSLT_CUSTOM Then

  <* This will remove the appropriate html section from
  RY_GP_RSLT_CUST.HTMLAREA1 based on the id of the div tag.
  The <div> tag id is created in HTML.RY_GP_RSLT_SEG_HDR which is invoked in
  DERIVED_RY_GP10.DETAIL_BUTTON.FieldChange
  Basically cut out the section, and rejoined - see &first and &second below *>

  &start = Find("<div id=" | "" | DERIVED_RY_GP10.ID_LBL,
  DERIVED_RY_GP10.HTMLAREA1);
  &end = Find("End of Div", DERIVED_RY_GP10.HTMLAREA1, &start);

  If &start > 0 And
    &end > 0 Then
    &first = Substring(DERIVED_RY_GP10.HTMLAREA1, 1, &start - 20);
    &second = Substring(DERIVED_RY_GP10.HTMLAREA1, &end + 28, 99999);

    DERIVED_RY_GP10.HTMLAREA1 = &first | &second;
  End-If;

  DERIVED_RY_GP10.ID_LBL = "";

End-If;

DERIVED_RY_GP10.DETAIL_BUTTON.FieldChange
Component number &mynumber;
/* &mynumber is initialise in DERIVED_RY_GP10.CAL_ID.RowInit */

If %Page = Page.RY_GP_RSLT_CUSTOM Then

  If &mynumber = 1 Then
    <* inject additional javascript for Copy to Excel;
    &mynumber = 1 denotes 1st time in, so need to build additional html
    <*
    DERIVED_RY_GP10.HTMLAREA1 = GetHTMLText(HTML.RY_GP_RSLT_HDR);
  Else
    &len = Len(DERIVED_RY_GP10.HTMLAREA1);
    rem Remove </tr> </table> tags - this came from html.RY_GP_RSLT_TRL;
    DERIVED_RY_GP10.HTMLAREA1 = Substring(DERIVED_RY_GP10.HTMLAREA1,
  1, &len - 15);
  End-If;

  SQLExec("select instr(:1, 'PAY') from dual", DERIVED_RY_GP10.CAL_ID, &pay_type);
  SQLExec("select instr(:1, 'OFF') from dual", DERIVED_RY_GP10.CAL_ID, &off_type);
  If &pay_type > 0 Or

```

```

    &off_type > 0 Then
    SQLExec("Select gp_paygroup, rslt_seg_num, rslt_ver_num, rslt_rev_num,
pin_gross_val, pin_net_val from ps_gp_rslt_seg_vw where emplid=:1 and cal_run_id=:2 and
cal_id=:3", DERIVED_RY_GP10.EMPLID, DERIVED_RY_GP10.CAL_RUN_ID,
DERIVED_RY_GP10.CAL_ID, &gp_paygroup, &rslt_seg_num, &rslt_ver_num,
&rslt_rev_num, &pin_gross_val, &pin_net_val);
    DERIVED_RY_GP10.HTMLAREA1 = DERIVED_RY_GP10.HTMLAREA1 |
GetHTMLText(HTML.RY_GP_RSLT_SEG_HDR, DERIVED_RY_GP10.EMPLID, " ",
&gp_paygroup, DERIVED_RY_GP10.CAL_ID, DERIVED_RY_GP10.CAL_RUN_ID, " ",
&rslt_seg_num, &rslt_ver_num, &rslt_rev_num, &pin_gross_val, &pin_net_val, "BOX" |
&mynumber);

    rem &record = CreateRecord(record.PS_GP_RSLT_ED_VW);
    DERIVED_RY_GP10.HTMLAREA1 = DERIVED_RY_GP10.HTMLAREA1 |
GetHTMLText(HTML.RY_GP_RSLT_ERN_DED_HDR, &mynumber);
    &sql = CreateSQL("Select a.pin_type, a.pin_nm, b.descr, a.calc_rslt_val, a.instance,
a.slice_bgn_dt, a.slice_end_dt from ps_gp_rslt_ed_vw a, ps_gp_pin b where emplid=:1 and
cal_run_id=:2 and cal_id=:3 and a.pin_num = b.pin_num order by pin_type desc, pin_nm",
DERIVED_RY_GP10.EMPLID, DERIVED_RY_GP10.CAL_RUN_ID,
DERIVED_RY_GP10.CAL_ID);
    While &sql.Fetch(&pin_type, &pin_nm, &descr, &cal_rslt_val, &instance,
&slice_bgn_dt, &slice_end_dt)
        &ed_data = &ed_data | "<tr><td>" | &pin_type | "</td><td>" | &pin_nm | "</td><td>" |
&cal_rslt_val | "</td><td>" | &descr | "</td><td>" | &instance | "</td><td>" | &slice_bgn_dt |
"</td><td>" | &slice_end_dt | "</td></tr>";
    End-While;
    &sql.Close();
    DERIVED_RY_GP10.HTMLAREA1 = DERIVED_RY_GP10.HTMLAREA1 |
&ed_data;
    DERIVED_RY_GP10.HTMLAREA1 = DERIVED_RY_GP10.HTMLAREA1 |
GetHTMLText(HTML.RY_GP_RSLT_ERN_DED_TRL);

    rem &record = CreateRecord(record.PS_GP_RSLT_ED_VW);
    DERIVED_RY_GP10.HTMLAREA1 = DERIVED_RY_GP10.HTMLAREA1 |
GetHTMLText(HTML.RY_GP_RSLT_ADJ_HDR, &mynumber);
    &sql = CreateSQL("Select a.pin_type, a.pin_nm, b.descr, a.calc_adj_val, a.base_adj_val,
a.unit_adj_val from ps_gp_rslt_ed_vw a, ps_gp_pin b where emplid=:1 and cal_run_id=:2 and
cal_id=:3 and a.pin_num = b.pin_num order by pin_type desc, pin_nm",
DERIVED_RY_GP10.EMPLID, DERIVED_RY_GP10.CAL_RUN_ID,
DERIVED_RY_GP10.CAL_ID);
    While &sql.Fetch(&pin_type, &pin_nm, &descr, &cal_adj_val, &base_adj_val,
&unit_adj_val)
        &adj_data = &adj_data | "<tr><td>" | &pin_type | "</td><td>" | &pin_nm | "</td><td>"
| &descr | "</td><td>" | &cal_adj_val | "</td><td>" | &base_adj_val | "</td><td>" |
&unit_adj_val | "</td></tr>";
    End-While;
    &sql.Close();
    DERIVED_RY_GP10.HTMLAREA1 = DERIVED_RY_GP10.HTMLAREA1 |
&adj_data;
    DERIVED_RY_GP10.HTMLAREA1 = DERIVED_RY_GP10.HTMLAREA1 |
GetHTMLText(HTML.RY_GP_RSLT_ADJ_TRL);

    rem &record = CreateRecord(record.PS_GP_RSLT_PI_P_VW);
    DERIVED_RY_GP10.HTMLAREA1 = DERIVED_RY_GP10.HTMLAREA1 |
GetHTMLText(HTML.RY_GP_RSLT_PI_P_HDR, &mynumber);
    &sql = CreateSQL("Select b.pin_nm, b.descr, a.instance, a.pi_source, a.pi_action_type,
a.abs_bgn_dt, a.abs_end_dt, a.gp_rate, a.gp_unit, a.gp_amt, a.gp_pct from
ps_gp_rslt_pi_p_vw a, ps_gp_pin b where a.emplid=:1 and a.pin_num = b.pin_num and
a.cal_run_id=:2 and a.cal_id=:3 order by a.instance", DERIVED_RY_GP10.EMPLID,
DERIVED_RY_GP10.CAL_RUN_ID, DERIVED_RY_GP10.CAL_ID);

```

```

While &sql.Fetch(&pin_nm, &descr, &gen_instance, &pi_source, &pi_action_type,
&abs_bgn_dt, &abs_end_dt, &gp_rate, &gp_unit, &gp_amt, &gp_pct)
    &pi_p_data = &pi_p_data | "<tr><td>" | &pin_nm | "</td><td>" | &descr | "</td><td>" |
    &gen_instance | "</td><td>" | &pi_source | "</td><td>" | &pi_action_type | "</td><td>" |
    &abs_bgn_dt | "</td><td>" | &abs_end_dt | "</td><td>" | &gp_rate | "</td><td>" | &gp_unit |
    "</td><td>" | &gp_amt | "</td><td>" | &gp_pct | "</td></tr>";
End-While;
&sql.Close();
DERIVED_RY_GP10.HTMLAREA1 = DERIVED_RY_GP10.HTMLAREA1 |
&pi_p_data;
DERIVED_RY_GP10.HTMLAREA1 = DERIVED_RY_GP10.HTMLAREA1 |
GetHTMLText(HTML.RY_GP_RSLT_PI_P_TRL);

rem &record = CreateRecord(record.PS_GP_RSLT_ACUM_VW);
DERIVED_RY_GP10.HTMLAREA1 = DERIVED_RY_GP10.HTMLAREA1 |
GetHTMLText(HTML.RY_GP_RSLT_ACUM_HDR, &mynumber);
&sql = CreateSQL("Select a.acm_prd_optn, a.pin_nm, b.descr, a.calc_rslt_val,
a.acm_from_dt, a.acm_thru_dt, a.user_key1, a.user_key2, a.user_key3 from
ps_gp_rslt_acum_vw a, ps_gp_pin b where a.emplid=:1 and a.cal_run_id=:2 and a.cal_id=:3
and a.pin_num = b.pin_num order by a.acm_prd_optn asc, a.pin_nm",
DERIVED_RY_GP10.EMPLID, DERIVED_RY_GP10.CAL_RUN_ID,
DERIVED_RY_GP10.CAL_ID);
While &sql.Fetch(&acm_prd_optn, &pin_nm, &descr, &cal_rslt_val, &acm_from_dt,
&acm_thru_dt, &user_key1, &user_key2, &user_key3)
    SQLExec("select a.xlatlongname from psxlatitem a where
a.fieldname='ACM_PRD_OPTN' and a.fieldvalue=:1 and a. effdt=(select max(b. effdt) from
psxlatitem b where b.fieldname = a.fieldname and b.fieldvalue = a.fieldvalue) and a. eff_status
= 'A'", &acm_prd_optn, &prd_desc);
    &acum_data = &acum_data | "<tr><td>" | &prd_desc | "</td><td>" | &pin_nm |
    "</td><td>" | &cal_rslt_val | "</td><td>" | &descr | "</td><td>" | &acm_from_dt |
    "</td><td>" | &acm_thru_dt | "</td><td>" | &user_key1 | "</td><td>" | &user_key2 |
    "</td><td>" | &user_key3 | "</td></tr>";
End-While;
&sql.Close();
DERIVED_RY_GP10.HTMLAREA1 = DERIVED_RY_GP10.HTMLAREA1 |
&acum_data;
DERIVED_RY_GP10.HTMLAREA1 = DERIVED_RY_GP10.HTMLAREA1 |
GetHTMLText(HTML.RY_GP_RSLT_ACUM_TRL);

&trl = GetHTMLText(HTML.RY_GP_RSLT_TRL);
DERIVED_RY_GP10.HTMLAREA1 = DERIVED_RY_GP10.HTMLAREA1 | &trl;

&mynumber = &mynumber + 1;

End-If;

SQLExec("select instr(:1, 'ABS') from dual", DERIVED_RY_GP10.CAL_ID, &abs_type);
SQLExec("select instr(:1, 'MAT') from dual", DERIVED_RY_GP10.CAL_ID, &mat_type);
If &abs_type > 0 Or
    &mat_type > 0 Then

    SQLExec("Select gp_paygroup, rslt_seg_num, rslt_ver_num, rslt_rev_num,
pin_gross_val, pin_net_val from ps_gp_rslt_seg_vw where emplid=:1 and cal_run_id=:2 and
cal_id=:3", DERIVED_RY_GP10.EMPLID, DERIVED_RY_GP10.CAL_RUN_ID,
DERIVED_RY_GP10.CAL_ID, &gp_paygroup, &rslt_seg_num, &rslt_ver_num,
&rslt_rev_num, &pin_gross_val, &pin_net_val);
    DERIVED_RY_GP10.HTMLAREA1 = DERIVED_RY_GP10.HTMLAREA1 |
GetHTMLText(HTML.RY_GP_RSLT_SEG_HDR, DERIVED_RY_GP10.EMPLID, " ",
&gp_paygroup, DERIVED_RY_GP10.CAL_ID, DERIVED_RY_GP10.CAL_RUN_ID, " ",

```

```
&rslt_seg_num, &rslt_ver_num, &rslt_rev_num, &pin_gross_val, &pin_net_val, "BOX" |  
&mynumber);
```

```
rem &record = CreateRecord(record.PS_GP_RSLT_ABS);  
DERIVED_RY_GP10.HTMLAREA1 = DERIVED_RY_GP10.HTMLAREA1 |  
GetHTMLText(HTML.RY_GP_RSLT_ABS_HDR, &mynumber);  
&sql = CreateSQL("Select a.pin_take_num, b.pin_nm, b.descr, a.orig_begin_dt,  
a.absence_date, to_char(a.absence_date, 'Day'), a.day_count, a.day_count_paid,  
a.day_count_unpaid, a.begin_entl_bal, a.end_entl_bal from ps_gp_rslt_abs a, ps_gp_pin b  
where a.emplid=:1 and a.pin_take_num = b.pin_num and a.cal_run_id=:2 and a.cal_id=:3  
order by a.absence_date desc, b.pin_nm", DERIVED_RY_GP10.EMPLID,  
DERIVED_RY_GP10.CAL_RUN_ID, DERIVED_RY_GP10.CAL_ID);  
While &sql.Fetch(&pin_take_num, &pin_nm, &descr, &orig_begin_dt, &absence_date,  
&day, &day_count, &day_count_paid, &day_count_unpaid, &begin_entl_bal,  
&end_entl_bal)  
    &abs_data = &abs_data | "<tr><td>" | &pin_nm | "</td><td>" | &descr | "</td><td>" |  
&orig_begin_dt | "</td><td>" | &absence_date | "</td><td>" | &day | "</td><td>" |  
&day_count | "</td><td>" | &day_count_paid | "</td><td>" | &day_count_unpaid |  
&begin_entl_bal | "</td><td>" | &end_entl_bal | "</td></tr>";  
End-While;  
&sql.Close();  
DERIVED_RY_GP10.HTMLAREA1 = DERIVED_RY_GP10.HTMLAREA1 |  
&abs_data;  
DERIVED_RY_GP10.HTMLAREA1 = DERIVED_RY_GP10.HTMLAREA1 |  
GetHTMLText(HTML.RY_GP_RSLT_ABS_TRL);
```

```
rem &record = CreateRecord(record.PS_GP_RSLT_GPI_VW);  
DERIVED_RY_GP10.HTMLAREA1 = DERIVED_RY_GP10.HTMLAREA1 |  
GetHTMLText(HTML.RY_GP_RSLT_GPI_HDR, &mynumber);  
&sql = CreateSQL("Select b.pin_nm, a.gen_instance, a.pi_source, a.pi_action_type,  
a.abs_bgn_dt, a.abs_end_dt, a.gp_rate, a.gp_unit, a.gp_amt, a.gp_pct from ps_gp_rslt_gpi_vw  
a, ps_gp_pin b where a.emplid=:1 and a.pin_num = b.pin_num and a.cal_run_id=:2 and  
a.cal_id=:3 order by a.gen_instance", DERIVED_RY_GP10.EMPLID,  
DERIVED_RY_GP10.CAL_RUN_ID, DERIVED_RY_GP10.CAL_ID);  
While &sql.Fetch(&pin_nm, &gen_instance, &pi_source, &pi_action_type, &abs_bgn_dt,  
&abs_end_dt, &gp_rate, &gp_unit, &gp_amt, &gp_pct)  
    &mat_data = &mat_data | "<tr><td>" | &pin_nm | "</td><td>" | &gen_instance |  
&pi_source | "</td><td>" | &pi_action_type | "</td><td>" | &abs_bgn_dt |  
&abs_end_dt | "</td><td>" | &gp_rate | "</td><td>" | &gp_unit | "</td><td>" |  
&gp_amt | "</td><td>" | &gp_pct | "</td></tr>";  
End-While;  
&sql.Close();  
DERIVED_RY_GP10.HTMLAREA1 = DERIVED_RY_GP10.HTMLAREA1 |  
&mat_data;  
DERIVED_RY_GP10.HTMLAREA1 = DERIVED_RY_GP10.HTMLAREA1 |  
GetHTMLText(HTML.RY_GP_RSLT_GPI_TRL);
```

```
&trl = GetHTMLText(HTML.RY_GP_RSLT_TRL);  
DERIVED_RY_GP10.HTMLAREA1 = DERIVED_RY_GP10.HTMLAREA1 | &trl;
```

```
&mynumber = &mynumber + 1;  
End-If;
```

```
End-If;
```

4. Apps Designer HTML

```
RY_GP_RSLT_CUSTOM_JS – Used by DERIVED_RY_GP10.HTMLAREA2.RowInit  
<script language="javascript">
```



```
if (window.attachEvent) { window.attachEvent('onload', Set_Focus);}
else if (window.addEventListener) { window.addEventListener('load', Set_Focus, false);}
else { document.addEventListener('load', Set_Focus, false);}
```

```
function Set_Focus()
{
var x = document.getElementById('Calendar');
x.style.display = "none";
document.getElementById("show_calendar_button").focus();
}
```

```
function Show_Calendar()
{
var mycal = document.getElementById('Calendar');
mycal.style.visibility = "visible";
mycal.style.display = "block";
//mycal.style.height = "150px";
}
```

```
function Hide_Calendar()
{
var mycal = document.getElementById('Calendar');
mycal.style.display = "none";
}
```

```
function do_calid(obj)
{
document.getElementById("DERIVED_RY_GP10_CAL_ID").value =
document.getElementById(obj).innerHTML;
var child =document.getElementById(obj);
var parent = child.parentNode;
var g_parent = parent.parentNode;
var gg_parent = g_parent.parentNode;
var cal_grp = gg_parent.parentNode.innerHTML;
document.getElementById("DERIVED_RY_GP10_CAL_RUN_ID").value =
cal_grp.substring(0,9);
document.getElementById("DERIVED_RY_GP10_DETAIL_BUTTON").focus();
document.getElementById("DERIVED_RY_GP10_DETAIL_BUTTON").click();
}
```

```
function do_calgrp(obj2)
{
var cal_grp = document.getElementById(obj2).innerHTML;
document.getElementById("DERIVED_RY_GP10_CAL_RUN_ID").value =
cal_grp.substring(0,9);
document.getElementById("SHOWME").focus();
document.getElementById("SHOWME").click();
document.getElementById("show_calendar_button").focus();
}
```

```
function Get_Payslip(){
var emplid = document.getElementById('STAFF_NUMBER').childNodes[0].innerHTML;
var cal_run_id = document.getElementById('DERIVED_RY_GP10_CAL_RUN_ID').value;
var cal_id = document.getElementById('DERIVED_RY_GP10_CAL_ID').value;
var myObject = new Object();
myObject.text = 'yyy';
myObject.emplid = emplid;
myObject.cal_run_id = cal_run_id;
myObject.cal_id = cal_id;
```

```

var ReturnVal =
window.showModalDialog("http://<servername>:8080/psp/hcmprp/EMPLOYEE/HRMS/c/G
PGB_SELF_SERVICE.GPGB_PSLIP_PU_PNLG.GBL?EMPLID=" + emplid +
"&CAL_RUN_ID=" + cal_run_id + "&CAL_ID=" + cal_id +
"&PORTALPARAM_PTCNAV=HC_GPGB_PSLIP_PU_PNLG_GBL&EOPP.SCNode=HR
MS&EOPP.SCPortal=EMPLOYEE&EOPP.SCName=HC_GLOBAL_PAYROLL&EOPP.SC
Label=Payslips&EOPP.SCFName=HC_GPCE_PRC_PAYSLIP&EOPP.SCSecondary=true&
EOPP.SCPTfname=HC_GPCE_PRC_PAYSLIP&FolderPath=PORTAL_ROOT_OBJECT.H
C_GLOBAL_PAYROLL.HC_GPCE_PRC_PAYSLIP.HC_GPGB_PSLIP_PU_PNLG_GBL
&IsFolder=false", myObject, 'dialogHeight:500px;dialogWidth:1000px;resizable:yes');
myObject.text = ReturnVal;
}

function Get_Summary(){
var emplid = document.getElementById('STAFF_NUMBER').childNodes[0].innerHTML;
var cal_run_id = document.getElementById('STAFF_NUMBER').childNodes[0].innerHTML;
var cal_id = document.getElementById('STAFF_NUMBER').childNodes[0].innerHTML;
var myObject = new Object();
myObject.text = 'yyy';
myObject.emplid = emplid;

var ReturnVal =
window.showModalDialog("http://<servername>:8080/psp/hcmprp/EMPLOYEE/HRMS/c/G
PGB_SELF_SERVICE.RY_PAY_RSLT_PIVOT.GBL?PORTALPARAM_PTCNAV=RY_P
AY_RSLT_PIVOT_GBL&EOPP.SCNode=HRMS&EOPP.SCPortal=EMPLOYEE&EOPP.S
CName=HC_GLOBAL_PAYROLL&EOPP.SCLabel=Payslips&EOPP.SCFName=HC_GPC
E_PRC_PAYSLIP&EOPP.SCSecondary=true&EOPP.SCPTfname=HC_GPCE_PRC_PAYS
LIP&FolderPath=PORTAL_ROOT_OBJECT.HC_GLOBAL_PAYROLL.HC_GPCE_PRC_
PAYSLIP.RY_PAY_RSLT_PIVOT_GBL&IsFolder=false", myObject,
'dialogHeight:700px;dialogWidth:1000px;resizable:yes');
myObject.text = ReturnVal;
}
</script>

```

RY_GP_RSLT_CUSTOM_CSS – Used by DERIVED_RY_GP10.HTMLAREA2.RowInit

```

<style type="text/css">
.scroll_bar {
    scrollbar-base-color: #FFCC00;
    scrollbar-face-color: #FFCC00;
    scrollbar-track-color: #FFFFFF99;
    scrollbar-3dlight-color: #FFFFFF99;
    scrollbar-highlight-color: black;
    scrollbar-arrow-color: black;
    scrollbar-darkshadow-color: #FFCC00;
    scrollbar-shadow-color: black;
}
.calendar_container {
    filter: progid:DXImageTransform.Microsoft.Glow(color=#cccccc,strength=1)
progid:DXImageTransform.Microsoft.Shadow(color=#000000,direction=150,strength=10);
    box-shadow: 3px 3px 3px #000;
}
.calendar_table {
    font-size: x-small;
    font-family: Arial, Helvetica, sans-serif;
    background-color: #FFCC00;
    box-shadow: 3px 3px 3px #000;
}
.calendar_row {
    font-size: x-small;

```

```

        font-family: Arial, Helvetica, sans-serif;
        background-color: #FFFF99;
        filter: progid:DXImageTransform.Microsoft.DropShadow(offx=10, offy=10, color=black);
        box-shadow: 3px 3px 3px #000;
    }
    .calendar_subrow {
        font-size: x-small;
        font-weight: bold;
        font-family: Arial, Helvetica, sans-serif;
        color: red;
        filter: progid:DXImageTransform.Microsoft.Glow(color=#cccccc,strength=1)
        progid:DXImageTransform.Microsoft.Shadow(color=#000000,direction=150,strength=10);
        box-shadow: 3px 3px 3px #000;
    }
    .menu_bar {
        font-size: x-small;
        color: #FFFFFF;
        background-color: #FF0000;
        align: centre;
        height: 40px;
        filter: progid:DXImageTransform.Microsoft.DropShadow(offx=10, offy=10, color=black);
        filter: progid:DXImageTransform.Microsoft.Glow(color=#cccccc,strength=1)
        progid:DXImageTransform.Microsoft.Shadow(color=#000000,direction=150,strength=10);
        box-shadow: 3px 3px 3px #000;
    }
    .result_container {
        width: 600px;
        height:100%;
        border:1px solid;
        border-color:#FFFF99;
        font-family :Arial; font-size :11pt;
        background-color:#FFFF99;
    }
    .result_calendar {
        font-size: x-small;
        font-family: Arial, Helvetica, sans-serif;
        background-color: #FFFF99;
    }
    .result_table {
        background-color:#FFFF99;
        overflow: auto;
        wrap: auto;
        height: 200px;
        width: 100%;
        font-family: Arial, Helvetica, sans-serif;
        font-size: x-small;
    }
    .result_header {
        font-size: x-small;
        font-family: Arial, Helvetica, sans-serif;
        font-weight:bold;
        background-color: #FFCC00;
        filter: progid:DXImageTransform.Microsoft.Glow(color=#cccccc,strength=1)
        progid:DXImageTransform.Microsoft.Shadow(color=#000000,direction=150,strength=10);
        box-shadow: 3px 3px 3px #000;
    }
}
</style>

```

```

SELECT year, apr, may, jun, jul, aug, sep, oct, nov, dec, jan, feb, mar
FROM (
WITH all_cal AS
(
SELECT a.emplid
, a.cal_run_id
, c.sovr_val_num year
, d.sovr_val_num period
, replace(xmlagg(
xmlelement ("tr", xmlattributes("calendar_subrow" as "class"),
xmlelement("td", xmlattributes(a.cal_id as ID, "do_calid(this.id)" as "onclick") , a.cal_id))
ORDER BY a.cal_id), '&quot;', ") || '</table>' cal_id
FROM ps_gp_pye_seg_stat a
, ps_gp_pye_prc_stat b
, ps_gp_cal_sovr c
, ps_gp_cal_sovr d
WHERE a.emplid = '%Bind(:1)'
AND a.emplid = b.emplid
AND a.empl_rcd = b.empl_rcd
AND a.gp_paygroup = b.gp_paygroup
AND a.cal_run_id = b.cal_run_id
AND a.cal_id = b.cal_id
AND a.gp_paygroup = c.gp_paygroup
AND a.cal_id = c.cal_id
AND c.pin_num = (select pin_num from ps_gp_pin where pin_nm = 'TAX VR BGN YR')
AND a.gp_paygroup = d.gp_paygroup
AND a.cal_id = d.cal_id
AND d.pin_num = (select pin_num from ps_gp_pin where pin_nm = 'TAX VR PERIOD')
GROUP BY a.emplid, a.cal_run_id, c.sovr_val_num, d.sovr_val_num
ORDER BY a.cal_run_id desc
)
)
SELECT YEAR
, MAX(CASE WHEN period = '01' THEN cal_run_id || '<br /><TABLE>' || cal_id ELSE NULL END)
apr
, MAX(CASE WHEN period = '02' THEN cal_run_id || '<br /><TABLE>' || cal_id ELSE NULL END)
may
, MAX(CASE WHEN period = '03' THEN cal_run_id || '<br /><TABLE>' || cal_id ELSE NULL END)
jun
, MAX(CASE WHEN period = '04' THEN cal_run_id || '<br /><TABLE>' || cal_id ELSE NULL END)
jul
, MAX(CASE WHEN period = '05' THEN cal_run_id || '<br /><TABLE>' || cal_id ELSE NULL END)
aug
, MAX(CASE WHEN period = '06' THEN cal_run_id || '<br /><TABLE>' || cal_id ELSE NULL END)
sep
, MAX(CASE WHEN period = '07' THEN cal_run_id || '<br /><TABLE>' || cal_id ELSE NULL END)
oct
, MAX(CASE WHEN period = '08' THEN cal_run_id || '<br /><TABLE>' || cal_id ELSE NULL END)
nov
, MAX(CASE WHEN period = '09' THEN cal_run_id || '<br /><TABLE>' || cal_id ELSE NULL END)
DEC
, MAX(CASE WHEN period = '10' THEN cal_run_id || '<br /><TABLE>' || cal_id ELSE NULL END)
jan
, MAX(CASE WHEN period = '11' THEN cal_run_id || '<br /><TABLE>' || cal_id ELSE NULL END)
feb
, MAX(CASE WHEN period = '12' THEN cal_run_id || '<br /><TABLE>' || cal_id ELSE NULL END)
mar
FROM all_cal
GROUP BY YEAR
ORDER BY YEAR DESC

```

)

RY_GP_RSLT_CAL_PIVOT_SQL_HDR – Used by DERIVED_RY_GP10.HTMLAREA2.RowInit

```
<table border="0" cellspacing="10px">
<tr>
<td id="show_calendar_button" class="menu_bar" onclick="Show_Calendar()">Show Calendar

</td>
<td></td>
<td id="hide_calendar_button" class="menu_bar" onclick="Hide_Calendar()" >Hide Calendar

</td>
<td></td>
<td class="menu_bar" onclick="Get_Payslip()">Payslips
</td>
<td></td>
<td class="menu_bar" onclick="Get_Summary()">12 Months Fiscal Summary
</td>
</tr>
</table>
<div class="scroll_bar" id="Calendar" style="WIDTH: 1500px; DISPLAY: block; HEIGHT: 300px;
VISIBILITY: visible; OVERFLOW: auto" id="Calendar">
<span style="height: 1px; font-size:x-small;font-style:italic;">***Click on the highlighted text, Calendar
ID, in <font color="red"><em>red</em></font> below to display payroll results</span>
<table border="0" colspan="11" width="100%" cellpadding="10" cellspacing="10"
class="calendar_container">
<tr class="calendar_table">
<td>Year</td>
<td>Apr</td>
<td>May</td>
<td>Jun</td>
<td>Jul</td>
<td>Aug</td>
<td>Sep</td>
<td>Oct</td>
<td>Nov</td>
<td>Dec</td>
<td>Jan</td>
<td>Feb</td>
<td>Mar</td>
</tr>
</div>
```

RY_GP_RSLT_CAL_PIVOT_SQL_DTL – Used by DERIVED_RY_GP10.HTMLAREA2.RowInit

```
<tr class="calendar_row" valign="top">
<td>% Bind(:13)</td>
<td>% Bind(:1)</td>
<td>% Bind(:2)</td>
<td>% Bind(:3)</td>
<td>% Bind(:4)</td>
<td>% Bind(:5)</td>
<td>% Bind(:6)</td>
<td>% Bind(:7)</td>
<td>% Bind(:8)</td>
<td>% Bind(:9)</td>
<td>% Bind(:10)</td>
<td>% Bind(:11)</td>
<td>% Bind(:12)</td></td></tr>
```

RY_GP_RSLT_HDR – Used by DERIVED_RY_GP10.DETAIL_BUTTON.FieldChange

```
</div>
<script type="text/javascript">
function selectElementContents(el) {
    var body = document.body, range, sel;
    if (body.createTextRange) {
        range = body.createTextRange();
        range.moveToElementText(el);
        range.select();
    } else if (document.createRange && window.getSelection) {
        range = document.createRange();
        range.selectNodeContents(el);
        sel = window.getSelection();
        sel.removeAllRanges();
        sel.addRange(range);
    }
}
}
```

```
function TableToExcel(obj)
{
// Start Excel and get Application object.
    var oXL = new ActiveXObject("Excel.Application");

    oXL.Visible = true;

// Get a new workbook.
    var oWB = oXL.Workbooks.Add();
    var oSheet = oWB.ActiveSheet;
// Fill cell.
    for (i=0; i<obj.rows.length; i++)
    {
        for (j=0; j<obj.rows[i].cells.length; j++)
        {
            var x = i + 1;
            var y = j + 1;
            oSheet.Cells(x, y).Value = obj.rows[i].cells[j].innerHTML;
        }
    }
// AutoFit columns A:H.
    oRng = oSheet.Range("A1", "H1");
    oRng.EntireColumn.AutoFit();
}
}
```

```
function hideData(mydiv)
{
var parent =document.getElementById(mydiv);
parent.removeAttribute("style")
while(parent.childNodes())
{
    parent.removeChild(parent.firstChild);
}
}
}
```

```
</script>
<a name='MYANCHOR'>
<table id="main_tbl">
<tr>
```

RY_GP_RSLT_SEG_HDR - Used by DERIVED_RY_GP10.DETAIL_BUTTON.FieldChange

```
<td valign="top">
<div id='%Bind(:12)' class="result_container">
<input class='calendar_container' id="DERIVED_RY_GP10_CLEAR_BUTTON" title="ID"
style="WIDTH: 72px"
onclick="this.form.DERIVED_RY_GP10_ID_LBL.value='%Bind(:12)';submitAction_win0(this.form,
this.name);" type="button" value="Clear Data" name="DERIVED_RY_GP10_CLEAR_BUTTON">
<!-- input type='button' name="Button1" value="Hide Data" class='PSPUSHBUTTON'
onclick="hideData('%Bind(:12)')"/ -->
<!------- Segment Information -->
<table style="width: 100%" cellSpacing="0" cols="2" cellPadding="0" border="1" class="menu_bar">
<tr>
<td style="width: 9%; height: 18px;" class="PSLEVEL2GRIDCOLUMNHDR">Staff Number:</td>
<td style="width: 12%; height: 18px;"><span>%Bind(:1)</span></td>
<td width="32%" style="height: 18px" class="style4">%Bind(:2)</td>
</tr>
<tr>
<td style="width: 9%" class="PSLEVEL2GRIDCOLUMNHDR">Pay Group:</td>
<td style="width: 12%">%Bind(:3)</td>
<td width="32%">&nbsp;</td>
</tr>
<tr>
<td style="width: 9%" class="PSLEVEL2GRIDCOLUMNHDR">Calendar ID:</td>
<td style="width: 12%">%Bind(:4)</td>
<td width="32%">&nbsp;</td>
</tr>
</table>
<table style="width: 100%" cellSpacing="0" cols="6" cellPadding="0" border="1"
class="result_calendar">
<tr>
<td class="result_header" align="left" width="100%" colspan="6" style="height: 31px">Calendar
Information</td>
</tr>
<tr>
<td style="width: 9%; height: 18px;" class="PSLEVEL2GRIDCOLUMNHDR">Calendar Group Id
:</td>
<td style="width: 12%; height: 18px;"><span
class="PSEDITBOX_DISPONLY">%Bind(:5)</span></td>
<td style="width: 9%; height: 18px;" class="PSLEVEL2GRIDCOLUMNHDR">Description :</td>
<td width="32%" style="height: 18px"><span
class="PSEDITBOX_DISPONLY">%Bind(:6)</span></td>
</tr>
<tr>
<td style="width: 9%; height: 18px;" class="PSLEVEL2GRIDCOLUMNHDR">Segment Number
:</td>
<td style="width: 12%; height: 18px;"><span
class="PSEDITBOX_DISPONLY">%Bind(:7)</span></td>
<td style="width: 9%; height: 18px;" class="PSLEVEL2GRIDCOLUMNHDR">Version :</td>
<td width="32%" style="height: 18px"><span
class="PSEDITBOX_DISPONLY">%Bind(:8)</span></td>
<td style="width: 9%; height: 18px;" class="PSLEVEL2GRIDCOLUMNHDR">Revision :</td>
<td width="32%" style="height: 18px"><span
class="PSEDITBOX_DISPONLY">%Bind(:9)</span></td>
</tr>
<tr>
<td style="width: 9%; height: 18px;" class="PSLEVEL2GRIDCOLUMNHDR">Gross Result Value
:</td>
```

```

    <td width="32%" style="height: 18px"><span
class="PSEDITBOX_DISPONLY">% Bind(:10)</span></td>
    <td style="width: 9%; height: 18px;" class="PSLEVEL2GRIDCOLUMNHDR">Net Result Value
:</td>
    <td width="32%" style="height: 18px"><span
class="PSEDITBOX_DISPONLY">% Bind(:11)</span></td>
</tr>
</table>

```

RY GP RSLT ERN DED HDR - Used by DERIVED RY GP10.DETAIL BUTTON.FieldChange

<!----- Earnings & Deduction Information -->

```

<div style="overflow: auto;height: 200px; width: 100%;">
<!--
<input class="PSPUSHBUTTON" type="button" value="Copy to Clipboard"
onclick="selectElementContents(document.getElementById('ern_ded_% Bind(:1)')) ;">
-->
<input class="calendar_container" type="button" value="Copy to Excel"
onclick="TableToExcel(document.getElementById('ern_ded_% Bind(:1)')) ;">

<table id="ern_ded_% Bind(:1)" style="width: 100%" cellspacing="0" cols="2" cellpadding="0"
border="1" class="result_table">
<tr>
<td class="result_header" colspan="7" style="height: 31px">Earnings & Deduction</td>
</tr>
<tr>
<td class="PSLEVEL2GRIDCOLUMNHDR" style="height: 20px; width: 1%;">Element
Type</td>
<td class="PSLEVEL2GRIDCOLUMNHDR" style="height: 20px; width: 4%;">Element
Name</td>
<td class="PSLEVEL2GRIDCOLUMNHDR" style="height: 20px; width: 2%;">Amount</td>
<td class="PSLEVEL2GRIDCOLUMNHDR" style="height: 20px; width: 5%;">Description</td>
<td class="PSLEVEL2GRIDCOLUMNHDR" style="height: 20px; width: 1%;">Instance</td>
<td class="PSLEVEL2GRIDCOLUMNHDR" style="height: 20px; width: 3%;">Slice <br />Begin
Date</td>
<td class="PSLEVEL2GRIDCOLUMNHDR" style="height: 20px; width: 3%;">Slice <br />End
Date</td>
</tr>
<!----- Data portion of Earnings & Deduction Information -->

```

RY GP RSLT ERN DED TRL - Used by DERIVED RY GP10.DETAIL BUTTON.FieldChange

<!----- Earnings & Deduction Information Trailer -->

```

</table>
</div>

```

RY GP RSLT ADJ HDR- Used by DERIVED RY GP10.DETAIL BUTTON.FieldChange

<!----- Deltas Information -->

```

<div style="overflow: auto;height: 200px; width: 100%;">
<!--
<input class="PSPUSHBUTTON" type="button" value="Copy to Clipboard"
onclick="selectElementContents( document.getElementById('rslt_adj_% Bind(:1)')) ;">
-->
<input class="calendar_container" type="button" value="Copy to Excel"
onclick="TableToExcel(document.getElementById('rslt_adj_% Bind(:1)')) ;">

```



```

<table id="rslt_adj_%Bind(:1)" cellSpacing="0" cols="2" cellPadding="0" border="1"
class="result" style="width: 100%; font-family: Arial, Helvetica, sans-serif; FONT-SIZE: x-small">
  <tr>
    <td class="result_header" colspan="6" style="height: 31px">Retro Adjustments</td>
  </tr>
  <tr>
    <td class="PSLEVEL2GRIDCOLUMNHDR" style="height: 20px; width: 5%;">Element
Type</td>
    <td class="PSLEVEL2GRIDCOLUMNHDR" style="height: 20px; width: 10%;">Element
Name</td>
    <td class="PSLEVEL2GRIDCOLUMNHDR" style="height: 20px; width: 10%;">Description</td>
    <td class="PSLEVEL2GRIDCOLUMNHDR" style="height: 20px; width: 2%;">Calculation
Adjustment</td>
    <td class="PSLEVEL2GRIDCOLUMNHDR" style="height: 20px; width: 2%;">Base
Adjustment</td>
    <td class="PSLEVEL2GRIDCOLUMNHDR" style="height: 20px; width: 2%;">Unit
Adjustment</td>
  </tr>
<!-- Data portion of Deltas Information -->

```

RY GP RSLT ADJ TRL - Used by DERIVED RY GP10.DETAIL BUTTON.FieldChange

```

<!-- Deltas Information Trailer -->

```

```

</table>
</div>

```

RY GP RSLT PI P HDR - Used by DERIVED RY GP10.DETAIL BUTTON.FieldChange

```

<!-- Positive Input Information -->

```

```

<div style="overflow: auto; wrap: auto; height: 150px ;width : 100%;">
<!--
<input class="PSPUSHBUTTON" type="button" value="Copy to Clipboard"
onclick="selectElementContents( document.getElementById('rslt_pi_%Bind(:1)') );">
-->
<input class="calendar_container" type="button" value="Copy to Excel"
onclick="TableToExcel(document.getElementById('rslt_pi_%Bind(:1)') );">

```

```

<table id="rslt_pi_%Bind(:1)" class="result" cellSpacing="0" cols="2" cellPadding="0" border="1"
style="width: 140%; font-size: x-small;">

```

```

  <tr>
    <td class="result_header" colspan="11" style="height: 31px">Positive Input Details</td>
  </tr>
  <tr>
    <td class="PSLEVEL2GRIDCOLUMNHDR" style="height: 10px; width: 2%;">Element
Name</td>
    <td class="PSLEVEL2GRIDCOLUMNHDR" style="height: 10px; width: 4%;">Description</td>
    <td class="PSLEVEL2GRIDCOLUMNHDR" style="height: 10px; width: 1%;">Instance</td>
    <td class="PSLEVEL2GRIDCOLUMNHDR" style="height: 10px; width: 1%;">Source</td>
    <td class="PSLEVEL2GRIDCOLUMNHDR" style="height: 10px; width: 1%;">Action Type</td>
    <td class="PSLEVEL2GRIDCOLUMNHDR" style="height: 10px; width: 1%;">Begin Date</td>
    <td class="PSLEVEL2GRIDCOLUMNHDR" style="height: 10px; width: 1%;">End Date</td>
    <td class="PSLEVEL2GRIDCOLUMNHDR" style="height: 10px; width: 1%;">Rate</td>
    <td class="PSLEVEL2GRIDCOLUMNHDR" style="height: 10px; width: 1%;">Unit</td>
    <td class="PSLEVEL2GRIDCOLUMNHDR" style="height: 10px; width: 1%;">Amount</td>
    <td class="PSLEVEL2GRIDCOLUMNHDR" style="height: 10px; width: 1%;">Percent</td>
  </tr>
<!-- Data portion of Earnings & Deduction Information -->

```

GP_RSLT_PI_P_TRL- Used by DERIVED_RY_GP10.DETAIL_BUTTON.FieldChange

<!----- Generated Positive Input Trailer -->

</table>

</div>

RY_GP_RSLT_ACUM_HDR - Used by DERIVED_RY_GP10.DETAIL_BUTTON.FieldChange

<!----- Accumulator Information -->

<div style="overflow: auto; height: 400px; width: 100%;">

<!--

<input class="PSPUSHBUTTON" type="button" value="Copy to Clipboard"

onclick="selectElementContents(document.getElementById('rslt_acum_%Bind(:1)'));">

-->

<input class="calendar_container" type="button" value="Copy to Excel"

onclick="TableToExcel(document.getElementById('rslt_acum_%Bind(:1)'));">

<table id="rslt_acum_%Bind(:1)" style="width=170%;font-family: Arial, Helvetica, sans-serif; font-size: x-small;" cellSpacing="0" cols="2" cellPadding="0" border="1" class="result">

<tr>

<td class="result_header" colspan="9" style="height: 31px">Accumulators</td>

</tr>

<tr>

<td class="PSLEVEL2GRIDCOLUMNHDR" style="height: 20px; width: 3%;">Period</td>

<td class="PSLEVEL2GRIDCOLUMNHDR" style="height: 20px; width: 4%;">Element

Name</td>

<td class="PSLEVEL2GRIDCOLUMNHDR" style="height: 20px; width: 1%;">Amount</td>

<td class="PSLEVEL2GRIDCOLUMNHDR" style="height: 20px; width: 5%;">Description</td>

<td class="PSLEVEL2GRIDCOLUMNHDR" style="height: 20px; width: 2%;">From</td>

<td class="PSLEVEL2GRIDCOLUMNHDR" style="height: 20px; width: 2%;">To</td>

<td class="PSLEVEL2GRIDCOLUMNHDR" style="height: 20px; width: 2%;">User Key1</td>

<td class="PSLEVEL2GRIDCOLUMNHDR" style="height: 20px; width: 2%;">User Key2</td>

<td class="PSLEVEL2GRIDCOLUMNHDR" style="height: 20px; width: 2%;">User Key3</td>

</tr>

<!----- Data portion of Accumulator Information -->

RY_GP_RSLT_ACUM_TRL - Used by DERIVED_RY_GP10.DETAIL_BUTTON.FieldChange

<!----- Accumulator Information Trailer -->

</table>

</div>

RY_GP_RSLT_ABS_HDR - Used by DERIVED_RY_GP10.DETAIL_BUTTON.FieldChange

<!----- Absence Information -->

<div style="overflow: auto; wrap: auto; height:400px ;width : 100%;">

<input class="calendar_container" type="button" value="Copy to Clipboard"

onclick="selectElementContents(document.getElementById('rslt_abs_%Bind(:1)'));">

<!-- <input class="PSPUSHBUTTON" type="button" value="Copy to Excel"

onclick="TableToExcel(document.getElementById('rslt_abs_%Bind(:1)'));">

-->

<table id="rslt_abs_%Bind(:1)" style="width: 170%" cellSpacing="0" cols="2" cellPadding="0" border="1" class="result">

<tr>

<td class="result_header" colspan="10" style="height: 31px">Absence Daily Data</td>

</tr>

<tr>

<td class="PSLEVEL2GRIDCOLUMNHDR" style="height: 10px; width: 1%;">Element
Name</td>

```

        <td class="PSLEVEL2GRIDCOLUMNHDR" style="height: 10px; width: 3%;">Description</td>
        <td class="PSLEVEL2GRIDCOLUMNHDR" style="height: 10px; width: 1%;">Original<br
/>Begin Date</td>
        <td class="PSLEVEL2GRIDCOLUMNHDR" style="height: 10px; width: 1%;">Absence
Date</td>
        <td class="PSLEVEL2GRIDCOLUMNHDR" style="height: 10px; width: 1%;">Day</td>
        <td class="PSLEVEL2GRIDCOLUMNHDR" style="height: 10px; width: 1%;">Day<br
/>Count</td>
        <td class="PSLEVEL2GRIDCOLUMNHDR" style="height: 10px; width: 1%;">Paid</td>
        <td class="PSLEVEL2GRIDCOLUMNHDR" style="height: 10px; width: 1%;">Unpaid</td>
        <td class="PSLEVEL2GRIDCOLUMNHDR" style="height: 10px; width: 1%;">Begin<br
/>Entitlement</td>
        <td class="PSLEVEL2GRIDCOLUMNHDR" style="height: 10px; width: 1%;">End<br
/>Entitlement</td>
    </tr>
<!------- Data portion of Earnings & Deduction Information -->

```

RY GP RSLT ABS TRL- Used by DERIVED RY GP10.DETAIL BUTTON.FieldChange

```

<!------- Absence Information Trailer -->
    </table>
</div>

```

RY GP RSLT GPI HDR- Used by DERIVED RY GP10.DETAIL BUTTON.FieldChange

```

<!------- Generated Positive Input Information -->
    <div style="overflow: auto; wrap: auto; height:200px ;width : 100%;">
<input class="calendar_container" type="button" value="Copy to Clipboard"
    onclick="selectElementContents( document.getElementById('rslt_gpi_%Bind(:1)') );">
<input class="calendar_container" type="button" value="Copy to Excel"
    onclick="TableToExcel(document.getElementById('rslt_gpi_%Bind(:1)') );">

    <table id ="rslt_gpi_%Bind(:1)" style="width: 140%" cellSpacing="0" cols="2" cellPadding="0"
border="1" class="result">
        <tr>
            <td class="result_header" colspan="10" style="height: 31px">Generated Positive Input
Details</td>
        </tr>
        <tr>
            <td class="PSLEVEL2GRIDCOLUMNHDR" style="height: 10px; width: 2%;">Element
Name</td>
            <td class="PSLEVEL2GRIDCOLUMNHDR" style="height: 10px; width: 1%;">Instance</td>
            <td class="PSLEVEL2GRIDCOLUMNHDR" style="height: 10px; width: 1%;">Source</td>
            <td class="PSLEVEL2GRIDCOLUMNHDR" style="height: 10px; width: 1%;">Action Type</td>
            <td class="PSLEVEL2GRIDCOLUMNHDR" style="height: 10px; width: 1%;">Begin Date</td>
            <td class="PSLEVEL2GRIDCOLUMNHDR" style="height: 10px; width: 1%;">End Date</td>
            <td class="PSLEVEL2GRIDCOLUMNHDR" style="height: 10px; width: 1%;">Rate</td>
            <td class="PSLEVEL2GRIDCOLUMNHDR" style="height: 10px; width: 1%;">Unit</td>
            <td class="PSLEVEL2GRIDCOLUMNHDR" style="height: 10px; width: 1%;">Amount</td>
            <td class="PSLEVEL2GRIDCOLUMNHDR" style="height: 10px; width: 1%;">Percent</td>
        </tr>
<!------- Data portion of Earnings & Deduction Information -->

```

RY GP RSLT GPI TRL - Used by DERIVED RY GP10.DETAIL BUTTON.FieldChange

```

<!------- Generated Positive Input Trailer -->
    </table>
</div>

```

RY GP RSLT TRL

```
<input type="hidden" value="End of Div"/>  
</div>  
</td>  
</tr>  
</table>
```

Author: Richard Yip
PeopleSoft HCM & Payroll Technical Consultant